

The Spelman (Plus) The Langston (Plus)

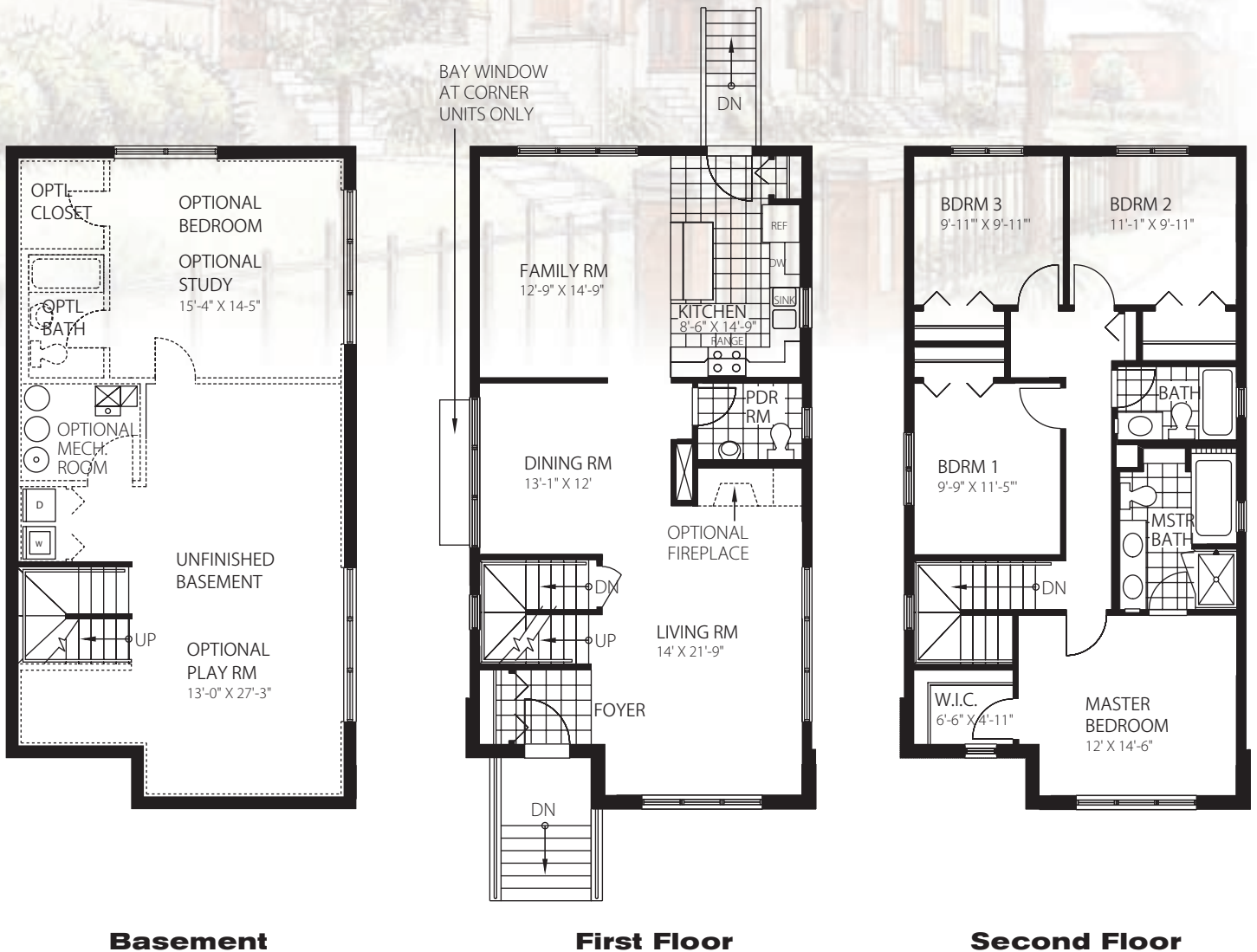
- 4 bedrooms
- 2.5 baths
- 1,984 sq. ft.



The Spelman



The Langston



The Spelman (Plus) The Langston (Plus)

The Interior of Your Home

- 9' ceiling heights in first level living space
- Solid core wood interior doors throughout
- Brushed stainless hardware (hinges, cabinet knobs, bathroom accessories and door knobs)
- Pre-wired for cable/satellite TV in living room/family room/master bedroom
- Pre-wired with high speed category 5 telecommunications in living room/kitchen/master bedroom
- Generous closets
- Laundry hook-up
- Frigidaire appliances (range, refrigerator, dishwasher, microwave oven)
- Stainless double bowl kitchen sink
- Painted wood baseboard and trim
- Ceramic tile flooring (entry foyer, kitchen, bath floors and tub surrounds)
- Choice of quality carpet
- Choice of 42" cabinet door selections (white, maple and oak)
- Choice of laminate countertops
- Wood cabinet bathroom vanities w/cultured marble tops
- Designer lighting

Energy Efficient & Security Features

- Energy efficient gas forced air heating system and central air-conditioning w/humidifier
- Quick recovery 50-gallon hot water heater
- 100 AMP service with conveniently located circuit breaker panel
- Vinyl thermal-pane insulated windows with thermal break and screens
- Batt type insulation with vapor barrier at exterior walls and roof
- Ground fault outlets at kitchens and baths
- Smoke detectors
- Carbon Monoxide detectors
- Programmable thermostat

Distinctive Exteriors

- Brick façades
- Limestone accents
- Wolmanized rear wood decking
- Concrete or metal entry stairs per plan
- Metal entry doors w/paint finish option
- Oversized lots
- Concrete parking pad

Unique Customizing Options

- Hardwood flooring
- Marble, granite or stone flooring and bath walls
- Granite countertops
- Custom paint colors
- Wood trim upgrades
- Jacuzzi tub
- Direct vent gas fireplace with ceramic or marble surround options
- Skylights with or without remote opener/shade
- Kitchen cabinet upgrades
- Stainless steel, Bisque or Black appliances
- Larger hot water heater
- Washer and dryer
- Security system
- Zoned HVAC
- Additional cable and phone jacks
- Finished basement
- Sliding doors
- Complete masonry exteriors
- Deck expansion
- Garage

These plans are not for construction; construction documents may differ from these plans as a result of product modifications, corrections and improvements. Mechanical, electrical and plumbing equipment locations will vary due to field conditions. Finished dimensions may vary from those listed on the plans and the total square footage is approximate. Specifications and product availability is subject to change. The developer reserves the right to modify the plans or specifications at any time. The marketing and sales agent makes no representations or warranties as to the accuracy of this information.

